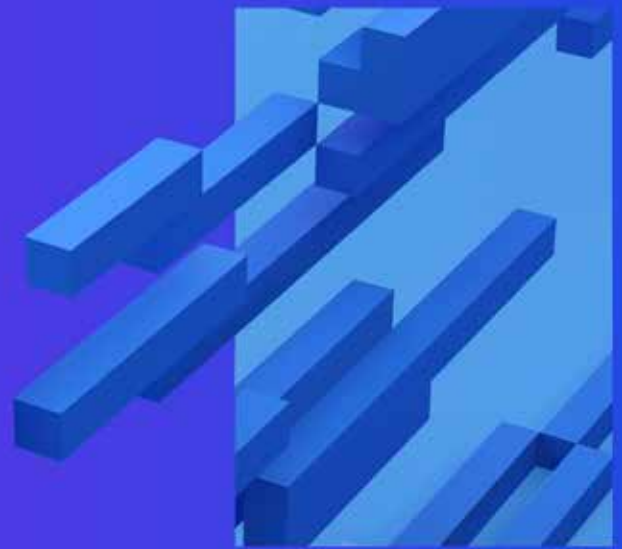




Citizen developer platform for a connected digital world

KPMG Digital Gateway | Modeling Suite

KPMG Tax



The KPMG Digital Gateway | Modeling Suite is a multi-user citizen developer platform empowering KPMG teams and their clients to access and build leading financial and tax models, facilitating a connected experience throughout the KPMG Digital Gateway platform.

The KPMG Digital Gateway | Modeling Suite offers clients a connected Digital Gateway experience, taking users on a journey from data collection through data transformation and modeling, to real-time reporting and analytics — all within the platform. The Modeling Suite enables model-to-model data exchange to securely pull in your data and push it back out for reporting and planning. With an intuitive interface, data management is streamlined and centralized, and analytics are generated in real-time.

Key features and potential benefits



Flexible and scalable

Our 'right-sized' adaptive modeling tools enable you to model any number of entity structure changes or financial statement adjustments, as well as the impact of new legislative and regulatory developments in a flexible and scalable manner.



Integrated

Our cloud connected models are integrated with the KPMG Digital Gateway platform delivering a connected data journey.



Connected

KPMG Digital Gateway | Modeling Suite connects with other features on the Digital Gateway platform and can integrate and exchange between multiple applications, models, and data sources.



Empowering

You don't need to be an expert. KPMG Digital Gateway | Modeling Suite allows citizen developers to build connected tax models in a low-code/no-code environment.



Supported customization

Gain access to KPMG's leading approach to modeling. Citizen developers are empowered to build their own custom models with timely support from a dedicated KPMG team, or leverage KPMG models already developed by our team of specialists.



Designed to be powerful and accurate

Sophisticated modeling capabilities with extensive multi-year scenario planning abilities and a network of error checks offers powerful and accurate visibility into your global tax scenario, risks, and opportunities.



Analytics for critical business decisions

Our modeling framework generates analytics and dashboards with real-time data to produce high-level assessments, detailed planning and forecasting, and compliance reporting.

Contact us

Tejas Varia

Principal

KPMG in the US

T: +1 408 367 4191

E: tejasvaria@kpmg.com

George Zhu

Senior Manager

KPMG in the US

T: +1 212 954 3935

E: muyizhu@kpmg.com

Gerwyn James

Managing Director

KPMG in the US

T: +1 720 924 7529

E: gerwynjames@kpmg.com

Peter Trapp

Senior Manager

KPMG in the US

T: +1 720 573 7150

E: petertrapp@kpmg.com

Some or all of the services described herein may not be permissible for KPMG audit clients and their affiliates or related entities.

kpmg.com/socialmedia



© 2023 Copyright owned by one or more of the KPMG International entities. KPMG International entities provide no services to clients. All rights reserved.

KPMG refers to the global organization or to one or more of the member firms of KPMG International Limited ("KPMG International"), each of which is a separate legal entity. KPMG International Limited is a private English company limited by guarantee and does not provide services to clients. For more detail about our structure please visit kpmg.com/governance.

The information contained herein is of a general nature and is not intended to address the circumstances of any particular individual or entity. Although we endeavor to provide accurate and timely information, there can be no guarantee that such information is accurate as of the date it is received or that it will continue to be accurate in the future. No one should act on such information without appropriate professional advice after a thorough examination of the particular situation.

The KPMG name and logo are trademarks used under license by the independent member firms of the KPMG global organization.

Throughout this document, "we," "KPMG," "us" and "our" refers to the global organization or to one or more of the member firms of KPMG International Limited ("KPMG International"), each of which is a separate legal entity.

Designed by Evalueserve.

Publication name: Citizen developer platform for a connected digital world

Publication number: 138694-G

Publication date: May 2023