



Executive Summary:

Intelligent Healthcare, Key Insights for Irish Healthcare.

KPMG Global Report Highlights (May 2025).



AI is Reshaping Care Delivery

From triage to diagnostics, remote monitoring to administrative support. AI is streamlining care, enabling earlier intervention, and reducing clinician burden.



Hospital Avoidance and Community Care Are Key Use Cases

AI supports Ireland's shift toward integrated and community-based care (aligned with Sláintecare objectives), helping predict deterioration, flag readmission risk, and optimise resources.



Data Maturity and EHR Integration Are Critical

The value of AI depends on strong data foundations. In Ireland, the success of EHR and key digital solutions will be influenced by how AI-ready these systems are.



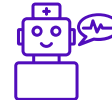
Ethical and Regulatory Readiness Is Now a Must

The EU AI Act introduces new requirements for transparency, risk classification, and clinical validation. Focus on diagnostic or decision, to support tools used in healthcare settings.



Population Health and Public Health Can Benefit

AI can help manage chronic disease, stratify population risk, and target early interventions - vital in addressing Ireland's rising demand and ageing population.



Workforce Pressure Needs AI As an Ally, Not a Threat

AI should augment, not replace, clinicians. Automating repetitive tasks frees up time for patient care and reduces burnout, a major concern across the Irish system.



KPMG can help you plan, validate, and operationalise AI

From governance and clinical risk reviews to AI model testing, procurement advice, and readiness assessments, KPMG Ireland can work with healthcare organisations to ensure AI is safe, ethical, and aligned to strategy.