



KPMG Tax Data Hub[®]

AI-enabled tax compliance and litigation management tool

KPMG. Make the Difference.



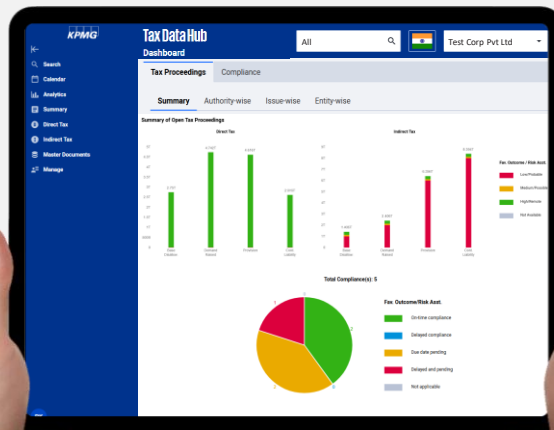
Digital tax governance

Interactive tax dashboards

Insightful management dashboards for data-backed decision making in tax function

AI-enabled notice management

Automated reading, summarisation and AI-assistance for responses



Centralised repository

Access controlled central availability of tax documents and data

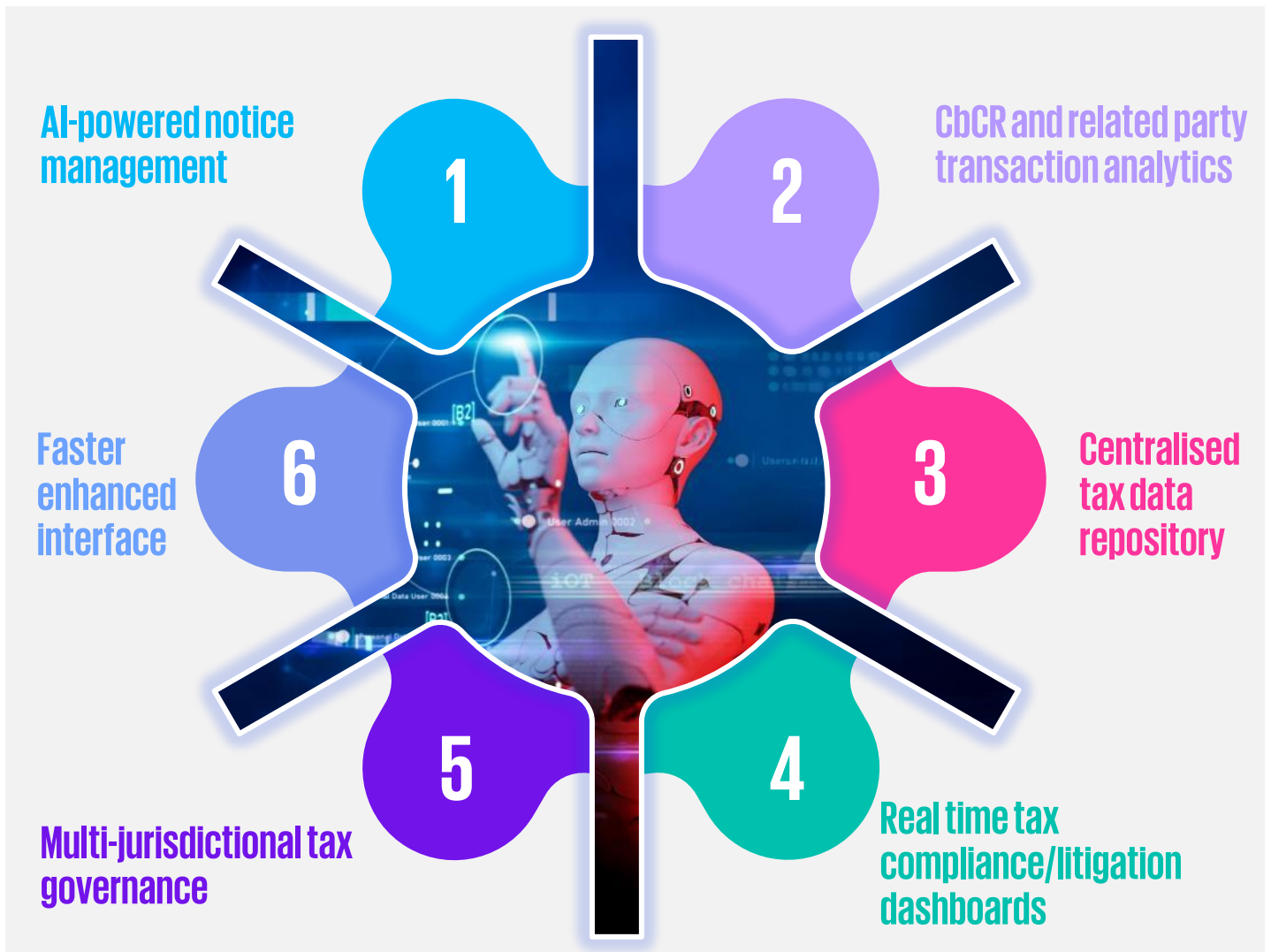
Visibility and control

over tax compliance and litigation matters – multi-country enabled

Fast | Secure | Smart

Tax litigation and compliance management technology

- Cloud-based technology with **highly secure firewalls** and access control
- **Ready made tax dashboards** with drill down on authority wise litigation, Uncertain Tax Positions, pending tax refunds, pending and delayed tax compliances
- Proactive **assessment preparedness** module
- Addresses need of **BFSI industry** on managing voluminous section 133(6) notices
- Country-by-Country Report (**CbCR**) and Related Party Transactions (**RPT**) Analytics
- **Tax data room** for M&A and tax due diligences (includes lifecycle of each assessment year)
- Ability to **track common tax issues** in indirect tax litigation across states.



KPMG in India contacts:

kpmg.com/in/socialmedia

Sunil Badala
National Head of Tax
E: sunilbadala@kpmg.com

Rahul Kashikar
Head of Tax Technology
E: rahulkashikar@kpmg.com

Ajay Mehra
Partner and Head
Tax Markets and Strategy
E: ajaymehra@kpmg.com

Sandesh Mahagaokar
Partner, Tax Technology
E: smahagaokar1@kpmg.com



The information contained herein is of a general nature and is not intended to address the circumstances of any particular individual or entity. Although we endeavor to provide accurate and timely information, there can be no guarantee that such information is accurate as of the date it is received or that it will continue to be accurate in the future. No one should act on such information without appropriate professional advice after a thorough examination of the particular situation.

KPMG Assurance and Consulting Services LLP, Lodha Excelus, Apollo Mills Compound, NM Joshi Marg, Mahalaxmi, Mumbai - 400 011 Phone: +91 22 3989 6000, Fax: +91 22 3983 6000.

© 2025 KPMG Assurance and Consulting Services LLP, an Indian Limited Liability Partnership and a member firm of the KPMG global organization of independent member firms affiliated with KPMG International Limited, a private English company limited by guarantee. All rights reserved.

The KPMG name and logo are trademarks used under license by the independent member firms of the KPMG global organization.