



KPMG Risk Hub

The single source of truth that enables insightful, risk-based decisions



KPMG Risk Hub provides an integrated, real-time, holistic view of governance, risk, and compliance (GRC), across every level of the business, all in a single cloud platform. This single source of truth provides the insights you need to help make better risk-based decisions that can lead to optimized business performance.

In a rapidly changing global landscape, emerging risks are impacting businesses more than ever. Companies face an array of reputational, environmental, regulatory, and societal forces, while risk functions are under increasing pressure to cut costs, address tech debt, and deal with a universal talent shortage.

67%

Risk professionals say **risk data brings an increased awareness and understanding** of potential risks and their impact on the organization.

Source: Future of risk, KPMG International. October 2024

Leading organizations are shifting the risk function from "compliance and control" to value creation, leveraging rich data and technology, including artificial intelligence (AI) and generative AI, to enhance their governance, risk, and compliance (GRC) capabilities.

KPMG Risk Hub



A multitude of GRC capabilities delivered through a single platform



Aligned and integrated GRC processes across your whole business



Simple and intuitive to use



Implementation, administration, and support provided by risk professionals



Cost-effective service via a monthly fee, with no capital cost



Eliminate the issue of siloed and disparate risk data

KPMG Risk Hub provides a fully integrated solution

Modules



Risk management



TPRM



Internal audit



BCM



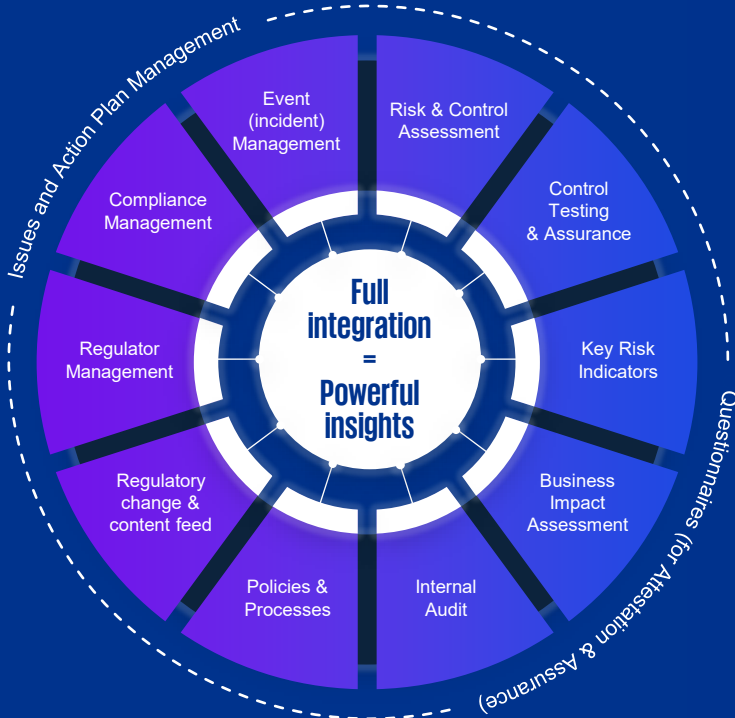
Regulatory compliance



ESG

Intuitive risk management

Optimize business growth and manage risk with professional support at every step.



Technology enablement

Cloud-hosted GRC solution available 24/7, managed and maintained by KPMG.

GRC reporting

Risk Hub is built on AI-powered IBM® OpenPages® and leverages IBM® Cognos® Analytics to provide real time insights.

Training

Training during on-boarding and throughout contract.

Business support

Ongoing business and technical help desk support.

System management

Continuous functionality improvements and regular software upgrades.

Data management

A managed service providing efficient and quality data services.

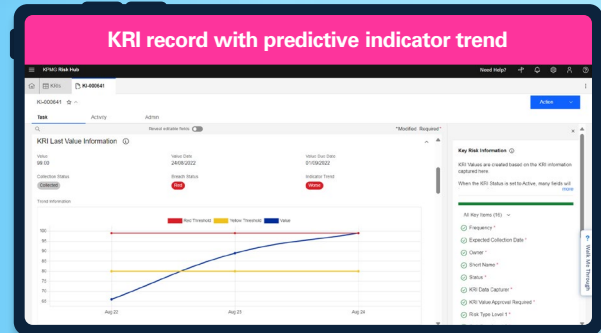
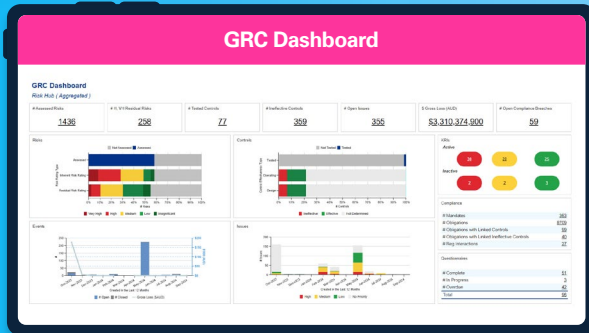
IBM and Cognos are trademarks of International Business Machines Corporation, registered in many jurisdictions worldwide.

Innovative technology – IBM® OpenPages®

Advanced business intelligence

IBM® watsonx Assistant™

Unified GRC platform



To find out how KPMG Risk Hub can help you, watch our video then get in touch today.



Contact us for more information:

riskhub.info@kpmg.com

kpmg.com/riskhub



Some or all of the services described herein may not be permissible for KPMG audit clients and their affiliates or related entities.

The information contained herein is of a general nature and is not intended to address the circumstances of any particular individual or entity. Although we endeavor to provide accurate and timely information, there can be no guarantee that such information is accurate as of the date it is received or that it will continue to be accurate in the future. No one should act upon such information without appropriate professional advice after a thorough examination of the particular situation.

© 2025 Copyright owned by one or more of the KPMG International entities. KPMG International entities provide no services to clients. All rights reserved.

KPMG refers to the global organization or to one or more of the member firms of KPMG International Limited ("KPMG International"), each of which is a separate legal entity. KPMG International Limited is a private English company limited by guarantee and does not provide services to clients. For more detail about our structure please visit kpmg.com/governance.

The KPMG name and logo are trademarks used under license by the independent member firms of the KPMG global organization.

Throughout this slipsheet, "we", "KPMG", "us" and "our" refers to the global organization or to one or more of the member firms of KPMG International Limited ("KPMG International"), each of which is a separate legal entity.