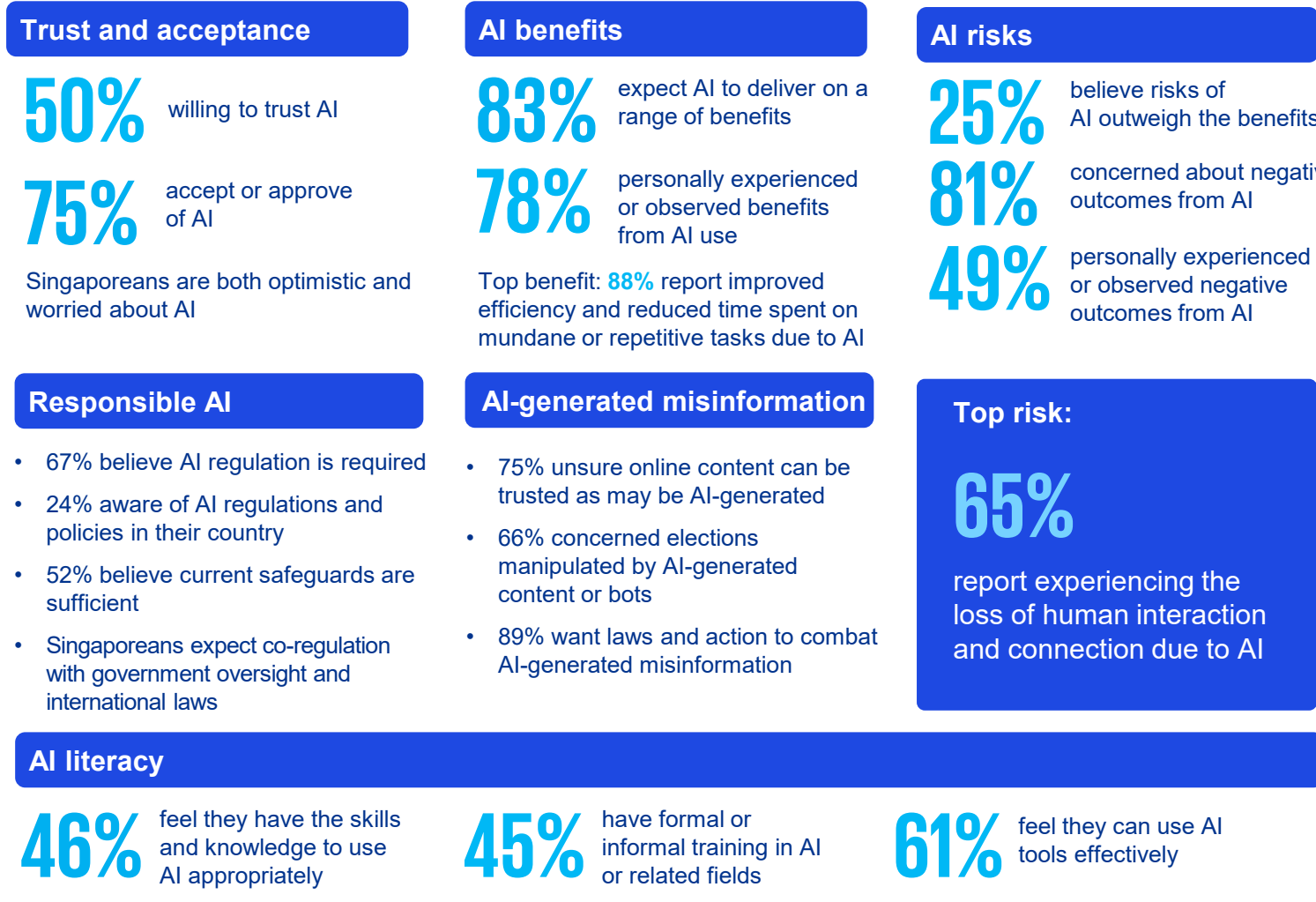




# Trust, attitudes and use of artificial intelligence: A global study 2025

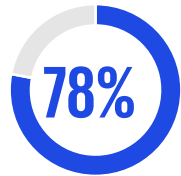


## Societal indicators

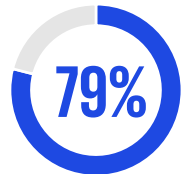


# Workplace indicators

## AI in the workplace



employees report their organization uses AI



intentionally use AI at work

## Worker reliance on AI

45%

felt they couldn't complete their work without the help of AI

51%

relied on AI to do a task rather than learning how to do

66%

concerned about being left behind if they don't use AI at work

## Complacent use of AI

58%

used AI at work in inappropriate ways

68%

made mistakes in their work due to AI

55%

used AI in ways that contravene policies and guidelines

69%

relied on AI output at work without evaluating its accuracy

63%

presented AI-generated content as their own

## Impacts of AI on work

65+%

report increased efficiency, quality of work, and innovation



49%

report increased revenue generating activity

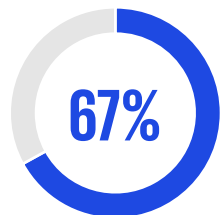
However,

28+%

report increased workload, stress and pressure

## AI governance at work

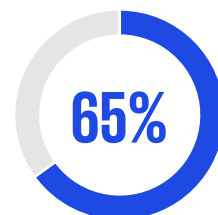
Reflections of employee beliefs about their organization



have an AI strategy

69%

provide training in responsible AI use



have policies and practices governing responsible use

39%

AI has increased compliance and privacy risks

50%

report key aspects of their work can be performed by AI



Some or all of the services described herein may not be permissible for KPMG audit clients and their affiliates or related entities.

The University of Melbourne research team led the design, conduct, data collection, analysis and reporting of this research.

Citation: Gillespie, N., Lockey, S., Ward, T., Macdade, A., & Hassed, G. (2025). Trust, attitudes and use of artificial intelligence: A global study 2025. The University of Melbourne and KPMG.

[kpmg.com](https://kpmg.com) | [unimelb.edu.au](https://unimelb.edu.au)



© 2025 The University of Melbourne ABN: 84 002 705 224 CRICOS No:00116K

The information contained herein is of a general nature and is not intended to address the circumstances of any particular individual or entity. Although we endeavor to provide accurate and timely information, there can be no guarantee that such information is accurate as of the date it is received or that it will continue to be accurate in the future. No one should act on such information without appropriate professional advice after a thorough examination of the particular situation.

Throughout this presentation, “we”, “KPMG”, “us” and “our” refers to the global organization or to one or more of the member firms of KPMG International Limited (“KPMG International”), each of which is a separate legal entity.

© 2025 Copyright owned by one or more of the KPMG International entities. KPMG International entities provide no services to clients. All rights reserved.

KPMG refers to the global organization or to one or more of the member firms of KPMG International Limited (“KPMG International”), each of which is a separate legal entity. KPMG International Limited is a private English company limited by guarantee and does not provide services to clients. For more detail about our structure please visit [kpmg.com/governance](https://kpmg.com/governance).

The KPMG name and logo are trademarks used under license by the independent member firms of the KPMG global organization.

Design by Evalueserve